

D-105 DataFast™



IDE Hard Drive Software Duplicator User's Manual



GREYSTONE PERIPHERALS INC., 130-A Knowles Drive, Los Gatos, CA 95030

TEL: (408) 866-4739 FAX: (408) 866-8328

E-Mail: grystone@grystone.com Web Page: <http://www.grystone.com>

A PublicARD, Inc. Company

LIMITED 1 YEAR WARRANTY

Greystone Peripherals Inc. warrants to the original buyer of this product that the hardware is free of defects in materials and workmanship for a period of one (1) year from the date of purchase. Should this product fail to be in good working order during the warranty period, the Company, at its sole option, will repair or replace the defective product with an identical product or product having similar features and functionality as determined by Greystone Peripherals, Inc.

LIFE SUPPORT/MEDICAL SYSTEM USE DISCLAIMER: DO NOT USE FOR MEDICAL PURPOSES

Greystone Peripherals, Inc. products may not be used as critical components in life support devices, life support systems or medical systems.

Life support devices or life support systems or medical devices are devices or systems which (a) are intended for surgical implant in the body, or (b) which support or sustain life and whose failure to perform, when properly used in accordance with the instructions provided in the labeling, can reasonably be expected to result in injury.

A critical component is any component in a life support device or life support system or medical system whose failure to perform can be reasonably expected to contribute to the failure or malfunction of the life support device or system or may be expected to affect the safety or effectiveness of such life support device or system.

Greystone Peripherals, Inc. cannot, and does not, assume the responsibility or risk of any injury or death related to any defect, error, failure or malfunction of the hardware, software or manuals which, taken together, comprise the Greystone product.

PROPRIETARY NOTICE

Greystone Peripherals Inc. makes no warranty of any kind with regard to this material, including, but not limited to, the implied warranties of merchantability and fitness for a particular purpose. Greystone Peripherals shall not be liable for errors contained herein or for incidental or consequential damages in connection with the furnishing, performance, or use of this material.

This document contains proprietary information which is protected by copyright. All rights are reserved. No part of this document may be photocopied, reproduced, or translated to another language without the written consent of Greystone Peripherals, Inc. The information contained in this document is subject to change without notice.

DataFast is a trademark of Greystone Peripherals Inc.

Copyright 1999 by Greystone Peripherals, Inc. All rights reserved.

D-UMAN-0009 6/99D

Contents

Chapter 1: Introduction

1-1 Introduction	1-1
1-2 Smart Options	1-1
1-3 Specifications	1-2
1-4 Features	1-3
1-5 Complete System Configuration	1-4

Chapter 2: Setting Up Your D-105

2-1 Unpacking Your D-105	2-1
2-2 Setting Up Your D-105	2-2

Chapter 3: Startup Using Standard Jobs

3-1 Startup	3-1
3-2 Standard Job Operations	3-4
3-2.1 Greystone Standard Jobs: Screen	3-5
Smart Copy	3-5
Mirror Copy	3-9
Test Disk	3-10
DOD Wipeout	3-10

Chapter 4: User-Defined Operations

4-1 User-Defined Jobs:	4-2
4-1.1 Default User Defined job	4-3
Disk Mode: Smart	4-5
Disk Mode: Test disk	4-6
Disk Mode: Mirror	4-7
Disk Mode: Clear disk	4-8
Disk Mode: Partition	4-8
Disk Mode: Wipeout	4-8
4-2 Other User-Defined Settings	4-9
4-2.1 Create a New Job	4-9
4-2.2 Edit User-Defined Job Name	4-9
4-2.3 Edit CHS Translation	4-10
4-2.4 View Data	4-11
4-2.5 Set System Options	4-16
4-2.6 Enable/Disable Target Drive	4-21

Chapter 5: Smart Options

5-1	How to Enable Smart Options	5-2
5-2	Smart Options Operations	5-3
5-2.1	NTFS Smart Option	5-3
5-2.2	Database Smart Option	5-3
5-2.3	Partition Mode Smart Option	5-5
	Disk Mode: Partition	5-7
5-2.4	DOD Wipeout Smart Option	5-11

Chapter 6: Password Protection

6-1

Chapter 7: Questions & Answers

7-1

7-1	General	7-1
-----	---------------	-----

7-2	Smart Options	7-4
-----	---------------------	-----

Chapter 1

Introduction

1-1 Introduction

Congratulations on your purchase of the D-105 DataFast™ IDE Hard Drive Software Duplicator from Greystone Peripherals, Inc. The D-105 disk duplicator is designed to be used as a stand-alone IDE duplication system to selectively copy program software and data from one master source drive to five target disk drives, simultaneously. Ideal for volume applications, its intelligent mode enables the custom configuration of drives, including partitioning and formatting during the duplication process. Target drives that are identical to the source drive may be “mirrored”, or duplicated exactly, sector by sector. For faster copying, or for dissimilar drives using a FAT16, FAT32, NTFAT or NTFS file system, a Smart Copy mode is used.

The duplication operation of the D-105 is based on the execution of a predefined job or method. Each job setup defines the type (physical details) of the source and destination disk, selective or complete copying, and mode of copying. The operation uses a series of display screens and menus to help the user execute jobs, and set up new jobs with a minimum of keystrokes.

1-2 Smart Options

This manual also documents instructions for using the DataFast Smart Options, which are not part of the standard DataFast features. The Smart Options provide the following features and must be purchased separately.

- **DOD Wipeout Smart Option**
 - Enables target drives to be completely erased, in accordance with DoD 5220.22-M specifications.

- **Partition Smart Option**

- The Partition Mode Smart Option can be used to choose one or more partitions from the source drive, to be duplicated to the target drives. In addition to choosing one or more partitions, the partitions can also be resized and/or reordered on the target drives. Each target drive configuration can be determined independent of the other target drives. With this option, a source drive can be constructed containing many different software loads, each of which can be duplicated individually to target drives.

- **NTFS Smart Option**

- The NTFS Smart Option copies only the data on an NTFS partition from the source to the target drives.

- **Database Smart Option**

- The Database Smart Option records process information in a delimited file for importation into many popular database applications.

To purchase any of the Smart Options, please call Greystone Peripherals at (408) 866-4739. You will be given a password key to unlock the purchased option for immediate use.

1-3 Specifications

- Maximum number of target drives: 5
- Maximum number of source or target partitions: 10
- File systems supported by **Smart Copy**: FAT12, FAT16, VFAT (Windows 95), FAT32, NTFAT and NTFS

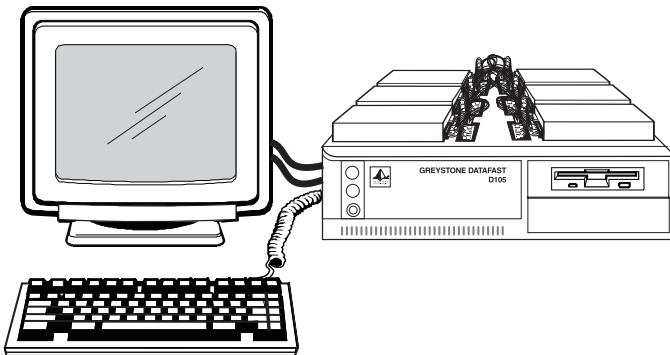
1-4 Features

- Duplicates software from a master disk drive to up to five target disk drives simultaneously
- Supports Ultra DMA ATA/EIDE/IDE drives, including all 2.5" notebook drives
- Data transfer speeds over 10 MB/sec.
- Copies all operating systems
- Smart Copy mode (and *NTFS Smart Option*) duplicates only files, not unused space or deleted files (all FAT file systems)
- Adjust size and number of partitions (up to 10) on each target drive (with *Partition Copy Smart Option*)
- Mirror mode copies even unknown file systems to drives with identical cylinder, head and sector counts
- Copies Compaq and Winbook maintenance partitions
- Duplicates drives larger than 8 GB
- Supports LBA, CHS addressing and Read/Write Multiple modes
- Automatic parameter translation option to keep logical cylinder count below 1024
- Multiple source and target partitions supported. Copy from any source partition to any target partition (with *Partition Copy Smart Option*)
- Wipeout mode fills each sector on disk with zeroes, or a user-specified pattern
- Empty partitions may be defined, or partitions may be formatted without copying any data (with *Partition Copy Smart Option*)
- Verify option reads back copied data and compares with original
- Data logging tracks job results (with *Database Smart Option*)

- Visual and audio signals for completion of operation and error alerts
- Compact size for portability

1-5 Complete System Configuration

- DataFast D-105 Unit
 - One serial port
 - One parallel printer port
 - One 3 ½" floppy drive
 - Six power cables
 - Six 40-pin data interface cables for connecting master and target 5 ¼" and 3 ½" drives
 - Six 44-pin data interface cables for connecting master and target Notebook drives
- Software diskette
- Monitor
- Keyboard



D-105 DataFast System

Chapter 2

Setting Up Your D-105

This chapter will guide you through the easy procedures for setting up your D-105 disk duplicator system. It includes the following sections:

- Unpacking your D-105
- Setting up the system for operation

Once you have completed the setup procedures detailed in this chapter, refer to Chapter 3 for operating instructions to get you up and running quickly.

2-1 Unpacking Your D-105

Before setting up the D-105, verify that you have received all the items for the system configuration you ordered. Please consult your dealer or Greystone Peripherals if any item is damaged or missing.

D-105 Basic System:

1. One D-105 unit
2. Six power cable connectors
3. Six 40-pin data ribbon cables for 5 1/4" and 3 1/2" drives
4. Six 44-pin data ribbon cables for Notebook drives
5. One AC power cord
6. One IDE DataFast (D-105) 3 1/2" diskette
7. Registration card
8. User's manual

D-105 Complete System:

A complete system should include all the items listed for the Basic System (as itemized above), plus:

9. One monitor (monochrome or color)
10. Mini keyboard

Record the D-105 Serial Number

Now is a good time to record the serial number and date of purchase. Locate the serial number on the unit and write it down in the space below for future reference if needed.

D-105 Serial No.: _____

Date of Purchase: _____

2-2 Setting Up Your D-105

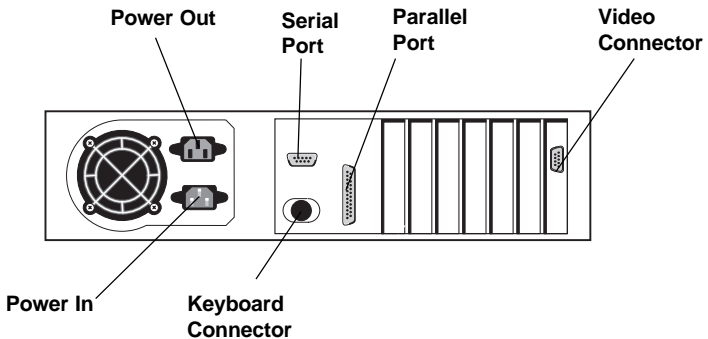
Proceed with the following instructions for easy set up of your D-105 disk duplicating system.

IMPORTANT

Before you begin, it is highly recommended that you make at least one backup copy of the IDE DataFast D-105 program disk. Operation of your D-105 runs directly from the program floppy at all times. Therefore, it is very important that you store your master disk in a safe place and run the program from a backup copy. The backup copy disk must not be write protected.

1. Place the D-105 system unit on a sturdy, level location away from direct sun or heat. Make sure you have convenient access to a 115/230V AC power source.
2. Connect the keyboard by plugging it into the keyboard connector located on the back of the unit.
3. Place the monitor in a convenient location next to the D-105 unit and make the cable connections on the back of the unit.
 - a. Connect the video cable to the 15-pin video connector.
 - b. Connect the power cord to the power outlet.

4. Connect the unit's power cord to the power-in connector on the back of the unit. **DO NOT plug the power cord into an AC power source at this time. (Wait until Step 8.)**



Back View of the D-105

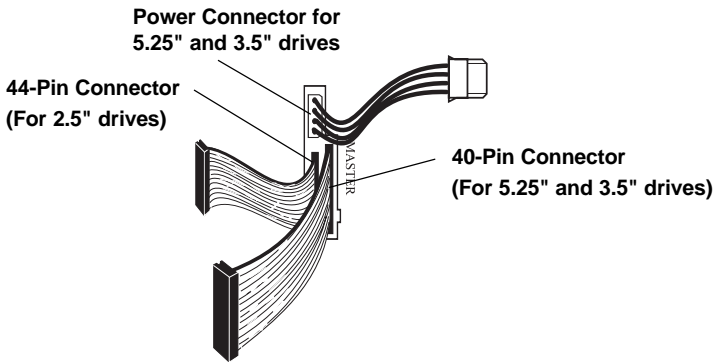
5. Connect the drive power cables to each of the *Master* and *Target* drive locations on top of the unit. *(These will be used for the 40-pin connector for 5.25" and 3.5" drives only.)*

Locate the six 4-wire power cables. Connect one 4-pin connector end from each power cable to the power connector at each drive connector station on top of the D-105 unit. Note that each station for connecting a drive is labeled to identify the *Master* and *Target* drives *Target 1*, *Target 2*, *Target 3*, *Target 4* and *Target 5*. The connectors are keyed for proper insertion.

6. Connect the data interface ribbon cables to each of the *Master* and *Target* drive locations on top of the unit. Two types of connectors are provided for connecting a target drive: 40-pin for standard 5.25" and 3.5" drives and 44-pin for smaller 2.5" notebook drives.
 - a. Connect one end of each 40-pin data ribbon cable to the 40-pin connector mounted on top of the D-105 unit for each drive location.

- b. Connect one end of each 44-pin data ribbon cable to the 44-pin connector mounted on top of the D-105 unit for each drive location.

Note that the connectors are keyed for proper insertion.



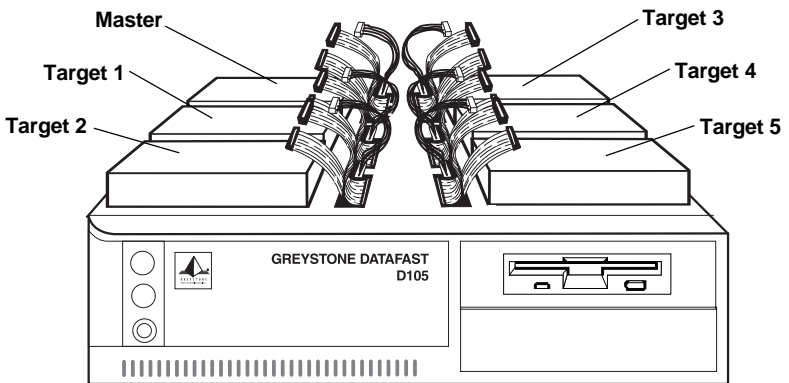
Connector Locations for Setting Up Each Master/Target Drive

- 7. Place the *Master* and up to five *Target* hard drives on the anti-conductive pad on the top of the D-105 unit. Facing the D-105 unit, position the hard drives next to the connector assemblies as follows. (Note the positions labeled on top of the unit).
 - a. *Master* drive at the left, rear position
 - b. *Target 1* drive at the left, middle position
 - c. *Target 2* at the left, front position
 - d. *Target 3* drive at the right, rear position
 - e. *Target 4* at the right, middle position
 - f. *Target 5* drive at the right, front position

SPECIAL NOTE

All drives, both *master* and *target* drives must be set (following the drive manufacturer's instructions) as **MASTER DRIVES**. They must not be set as slave drives, or set to cable select.

8. Plug in the unit's power cord into an AC power source. (Note that the power supply will automatically detect and switch to the correct 115/230V voltage source when the unit is powered on.)



D-105 with Drives in Position

The D-105 unit is now ready for operation. Continue to *Chapter 3* to complete the cable connections and begin disk duplicating.

Chapter 3

Startup Using Standard Jobs

This chapter will guide you through the quick and easy operation of your D-105 disk duplicator system using the “Greystone Standard Jobs” screen. The menu screen options presented in this chapter describe the functions available for the majority of your copying needs. These screens are factory set for safe, automatic execution; you cannot change any of the job settings. As you become more familiar with the D-105’s functions, you will find that there are many features that can be accessed through user-defined jobs, where you can create your own jobs that can be saved. Refer to Chapter 4 for information regarding the user-defined options.

Please note that the terms “source” and “master” are used interchangeably throughout this document.

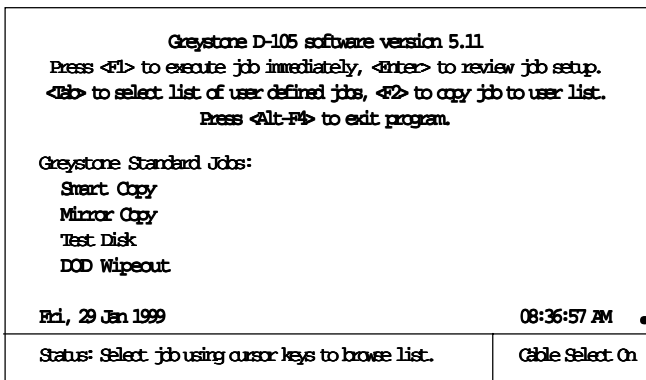
3-1 Startup

Proceed with the following steps after completing the initial hardware setup outlined in *Chapter 2*.

1. Turn the monitor ON.
2. Insert the 3 ½" IDE DataFast (D-105) program disk in the floppy drive. Make sure the disk is NOT write protected.
3. Turn the D-105 unit ON to boot from the floppy disk to load the program software.

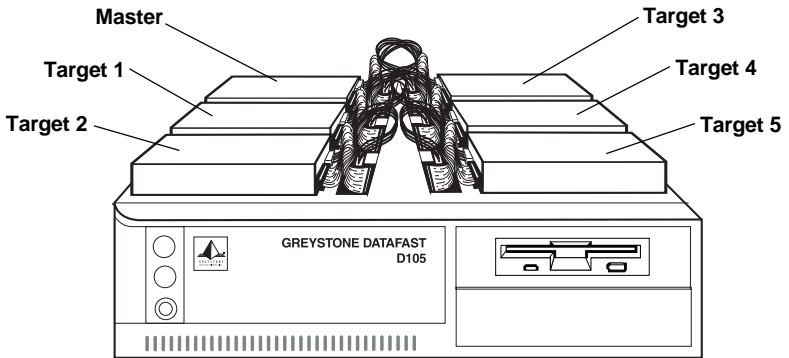
- Once completed, the program will continue to boot, display a “Greystone Peripherals” greeting screen, and then open to the main “Greystone Standard Jobs” menu screen.

Main “Greystone Standard Jobs” screen:



- Connect the drives to the system when the above “Greystone Standard Jobs” screen is displayed.
 - Plug in each power cable connector from the D-105 unit to the appropriate *Master* or *Target* drive. It is VERY IMPORTANT that the correct cable is connected to each drive (*Master* to *Master*, *Target 1* to *Target 1*, etc.)
 - Connect the appropriate data ribbon cable (40- or 44-pin) from the D-105 unit to each *Master* and *Target* drive. It is VERY IMPORTANT that the correct cable is connected to each drive. (*Master* to *Master*, *Target 1* to *Target 1*, etc.)

MAKE SURE PIN 1 ON THE CABLES AND DRIVE MATCH WHEN MAKING THE CONNECTIONS.



Master/Target Drives with Cable Connections

The drives are now ready for the job operation you choose to perform. The drive power will remain OFF until a job is started.

3-2 Standard Jobs Operations

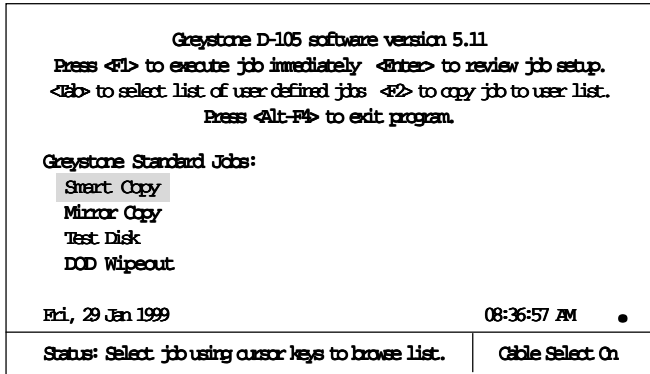
Once the drives are connected, you have the choice of job operations to perform from the main “Greystone Standard Jobs” menu. The following key commands are used to navigate through the program.

- Use the <arrow> cursor keys to highlight your selection.
- Press <F1> to run job.
- Press <Enter> to view the job setup.
- Press <Esc> once to stop an operation or go back to previous menu screen.
- Press <Alt><F4> to exit the program when no operation is in progress.
- Type **GO** at the A:\ DOS prompt to restart the program after exiting the program. It will also report any errors it encounters as it loads.

The basic rules for using **Smart Copy** or **Mirror Copy** modes:

- If you have dissimilar drives (*different* makes, models, cylinders, head and sectors), or if the file system is FAT12, FAT16, FAT32, VFAT, NTFAT or NTFS, select the **Smart Copy** mode to invoke the disk duplicating process from the master to the connected target drive(s).
- If all drives are of the same manufacturer and model, with the *same* cylinders, heads and sectors, select **Mirror Copy** mode, or **Smart Copy** mode.

3-2.1 Greystone Standard Jobs: Screen



The following sections describe the jobs you can run from the main “Standard Jobs” menu for auto-processing. The example screens provided in **Smart Copy** mode are common to all the Standard Jobs options when you execute the <Enter> and <F1> key commands. You can also view other option screens (invoked by the key commands identified at the top of each screen) to view the default settings. *Remember that when using the default “Greystone Standard Jobs” operations, the settings are automatically set by the program and cannot be changed.*

Smart Copy

This mode copies the entire source master drive to designated targets, keeping the basic source’s partition structure intact. If the file system of a source partition is unknown and the source and target drives have matching heads and sector/track configuration, the target partition size will be set equal to the source partition, and the contents will be “partition mirror” copied. If the file system is known (with FAT12, FAT16, FAT32, NTFAT, or NTFS), the target partition size will be automatically adjusted, based on the ratio of the capacity of the source drive to the capacity of the target drive. Data will be copied file-by-file, adjusting target FAT size, and cluster size as needed.

Smart Copy - Standby Screen

Command key: <Enter>

Highlight the **Smart Copy** mode option and press <Enter> to view the standby/drive status screen.

Smart Copy	
<F1> Start copy <F7> Edit CHS trans. <F10> = Set system options <Enter> = Edit copy options for selected target <V> Verify previous copy <Delete> = Disable target position <F9> = View data	
Source Drive	Capacity Status
WDC AC3400L	3815 Drive ready
Target Drives	
1 QUANTUM FIREBALL_TM3840A	3682 Drive ready
2 FUJITSU ML638TAU	2452 Drive ready
3 ST5 1080A	1034 Drive ready
4 IBM-DAQA-32160	2014 Drive ready
5 QUANTUM FIREBALL ST6.4 A	6150 Drive ready
Fri, 29 Jan 1999	08:36:57 AM .
Status: Idle	Ctrl-Sect-On

Before executing **Smart Copy**, you can view the settings the program has automatically allocated for the master and target drive partitions.

Master drive partition details

Command key: <Enter>

To view the master drive's configuration, while in the job standby screen, use the arrow keys to highlight-select the source drive and press <Enter>. The following identifies the drive description and partition status.

Smart Copy	
<Esc> = Return to main screen, , <F10> = Set system options	
Source Model Number:	WDC AC34000L
Serial Number:	WD-WT3510266621
Firmware Rev:	24.39E26
Cylinders:	7752
Megabyte Capacity:	3815
Heads:	16
Total Sectors:	781416
Sectors/Track:	63
R/W Multi:	16
LEA mode:	Yes
ATA PIO Mode:	4
Source Drive partitions	Cluster usage:
Size Type System	Size Highest # Used / Total
1 2016 HUGE MSWIN4.1 [64]	12601 9268 64512 (14%)
2 1795 HUGE MSDOS5.0 [64]	1 2 57600 (0%)
Fri, 29 Jan 1999	08:36:57 AM .
Status: Drive ready	Ctrl-Sect-On

Press <Esc> to go back to the Smart Copy job standby screen.

Target drive partition details

Command Key: <Enter>

To view a target drive's setup parameters, while in the job standby screen, use the arrow keys to highlight select the target drive you want to check and press <Enter>. The following screen identifies the drive description and allocated partition status.

Smart Copy									
<Esc> = Return to main screen					<F10> = Set system options				
<F7> = Edit CHS translation parameters					<F8>=Copy target setup to other targets				
Target 1 Model Number: QUANTUM FIREBALL_TM3840A									
Serial Number: 396621616730									
Firmware Rev: A6B.2000					Cylinders: 7480				
Megabyte Capacity: 3682					Heads: 16				
Total Sectors: 7539840					Sectors/Track: 63				
R/W Multi: 16			LBA mode: Yes			ATA PIO Mode: 4			
Source Drive partitions			Target Partition Setup:			Disk Mode: Smart			
Size	Type	System		Size					
1	2016	HUGE	MSWIN4.1	1 ->	1945	Smart Copy			
2	1795	HUGE	MSDOS5.0	2 ->	1732	Smart Copy			
Fri, 29 Jan 1999								08:36:57 AM .	
Status: Press <space> to change disk mode								Cable Select On	

Press <Esc> to go back to the job standby screen.

Run Smart Copy

Command key: <F1>

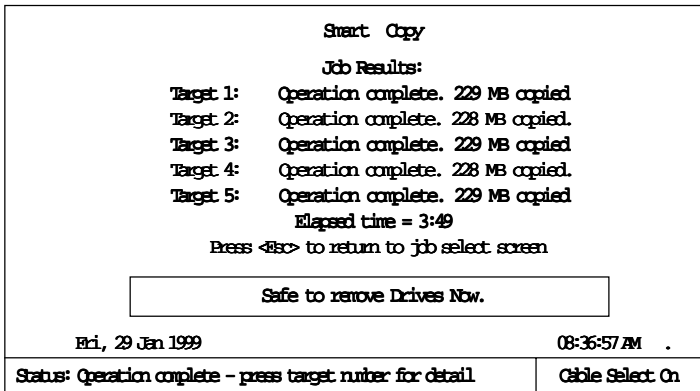
Press <F1> to automatically execute the Smart Copy operation. The source/target drives, and files names as they are being copied are displayed.

Smart Copy									
Common PIO mode = 4									
Common R/W multiple block size = 16									
Source Drive					Capacity Status				
WDC AC3400L					7340 1: <file name>				
Target Drives									
1	QUANTUM	FIREBALL_	TM3840A	7340	46%	<input type="checkbox"/>	_____		
2	FUJITSU	ML638TAU		2452	46%	<input type="checkbox"/>	_____		
3	ST5	1080A		1034	46%	<input type="checkbox"/>	_____		
4	IBM-DAQA-	32160		2014	46%	<input type="checkbox"/>	_____		
5	QUANTUM	FIREBALL	ST6.4 A	6150	46%	<input type="checkbox"/>	_____		
Fri, 29 Jan 1999								08:36:57 AM .	
Status: Duplicating								Cable Select On	

The following sequence of "end of copying" screens will be displayed after processing is complete, prompting you when the drives are safe to remove.

<p>Smart Copy</p> <p><F1> Start copy <F7> Edit CHS trans. <F10> = Set system options <Enter> = Edit copy options for selected target <V> Verify previous copy <Insert> = Enable target</p> <table> <thead> <tr> <th>Source Drive</th> <th>Capacity</th> <th>Status</th> </tr> </thead> <tbody> <tr> <td>WDC AC3400L</td> <td>7340</td> <td>7248 Files</td> </tr> </tbody> </table> <p>Target Drives</p> <table> <tbody> <tr> <td>1 QUANTUM FIREBALL_TM3840A</td> <td>7340</td> <td>100%</td> </tr> <tr> <td>2 FUJITSU M1638TAU</td> <td>7340</td> <td>100%</td> </tr> <tr> <td>3 ST5 1080A</td> <td>7340</td> <td>100%</td> </tr> <tr> <td>4 IBM-DAQA-32160</td> <td>7340</td> <td>100%</td> </tr> <tr> <td>5 QUANTUM FIREBALL ST6.4 A</td> <td>7340</td> <td>100%</td> </tr> </tbody> </table> <div style="border: 1px solid black; padding: 5px; margin: 10px auto; width: fit-content;"> Shutting down drive power, please wait a moment. </div> <p style="text-align: right;">Fri, 29 Jan 1999 08:36:57 AM .</p> <table border="1" style="width: 100%;"> <tr> <td style="width: 60%;">Status: Duplicating</td> <td style="width: 40%;">Cable Select On</td> </tr> </table>		Source Drive	Capacity	Status	WDC AC3400L	7340	7248 Files	1 QUANTUM FIREBALL_TM3840A	7340	100%	2 FUJITSU M1638TAU	7340	100%	3 ST5 1080A	7340	100%	4 IBM-DAQA-32160	7340	100%	5 QUANTUM FIREBALL ST6.4 A	7340	100%	Status: Duplicating	Cable Select On
Source Drive	Capacity	Status																						
WDC AC3400L	7340	7248 Files																						
1 QUANTUM FIREBALL_TM3840A	7340	100%																						
2 FUJITSU M1638TAU	7340	100%																						
3 ST5 1080A	7340	100%																						
4 IBM-DAQA-32160	7340	100%																						
5 QUANTUM FIREBALL ST6.4 A	7340	100%																						
Status: Duplicating	Cable Select On																							

<p>Smart Copy</p> <p><F1> Start copy <F7> Edit CHS trans. <F10> = Set system options <Enter> = Edit copy options for selected target <V> Verify previous copy <Insert> = Enable target</p> <table> <thead> <tr> <th>Source Drive</th> <th>Capacity</th> <th>Status</th> </tr> </thead> <tbody> <tr> <td>WDC AC3400L</td> <td>7340</td> <td>7248 Files</td> </tr> </tbody> </table> <p>Target Drives</p> <table> <tbody> <tr> <td>1 QUANTUM FIREBALL_TM3840A</td> <td>7340</td> <td>100%</td> </tr> <tr> <td>2 FUJITSU M1638TAU</td> <td>7340</td> <td>100%</td> </tr> <tr> <td>3 ST5 1080A</td> <td>7340</td> <td>100%</td> </tr> <tr> <td>4 IBM-DAQA-32160</td> <td>7340</td> <td>100%</td> </tr> <tr> <td>5 QUANTUM FIREBALL ST6.4 A</td> <td>7340</td> <td>100%</td> </tr> </tbody> </table> <div style="border: 1px solid black; padding: 5px; margin: 10px auto; width: fit-content;"> Waiting for drives to come to a Complete Stop. </div> <p style="text-align: right;">Fri, 29 Jan 1999 08:36:57 AM .</p> <table border="1" style="width: 100%;"> <tr> <td style="width: 60%;">Status: Duplicating</td> <td style="width: 40%;">Cable Select On</td> </tr> </table>		Source Drive	Capacity	Status	WDC AC3400L	7340	7248 Files	1 QUANTUM FIREBALL_TM3840A	7340	100%	2 FUJITSU M1638TAU	7340	100%	3 ST5 1080A	7340	100%	4 IBM-DAQA-32160	7340	100%	5 QUANTUM FIREBALL ST6.4 A	7340	100%	Status: Duplicating	Cable Select On
Source Drive	Capacity	Status																						
WDC AC3400L	7340	7248 Files																						
1 QUANTUM FIREBALL_TM3840A	7340	100%																						
2 FUJITSU M1638TAU	7340	100%																						
3 ST5 1080A	7340	100%																						
4 IBM-DAQA-32160	7340	100%																						
5 QUANTUM FIREBALL ST6.4 A	7340	100%																						
Status: Duplicating	Cable Select On																							



Mirror Copy

The disk **Mirror Copy** mode is valid only for target drives which have the same number of cylinders, heads and sectors per track as the source drive. For Mirror Copy mode, the maximum number of megabytes to be copied must be defined. To duplicate identical drives, zero (0) for the back megabytes, and 65535 (maximum) for the front megabytes is normally set. This ensures that the entire drive is copied sector for sector.

Highlight the **Mirror Copy** option and press <Enter> to view the drive status.

Press <F1> to automatically execute the **Mirror Copy** operation. The source, target drives and percent copied is displayed.

A final “Job Results” screen will be presented after the process is completed.

Test Disk

Selecting the “**Test disk**” option enables you to test the capacity of the drive you specify. This mode will read blocks of data from the selected target drive, save the data in RAM, write a test pattern to the same area of the target disk, read back and verify the test pattern, write the original data back to the disk, and verify that the original data was written back correctly. If any errors occur, the process will be stopped and the errors reported. The test process will be repeated for successive blocks on the disk. The front MB and back MB fields will specify what portion of the disk will be tested in this manner. The default values are set to test the full disk: Front MB = 65535 and Back MB = 0. If you only want to test a portion of the drive, you can specify different begin and end parameters to test.

DOD Wipeout

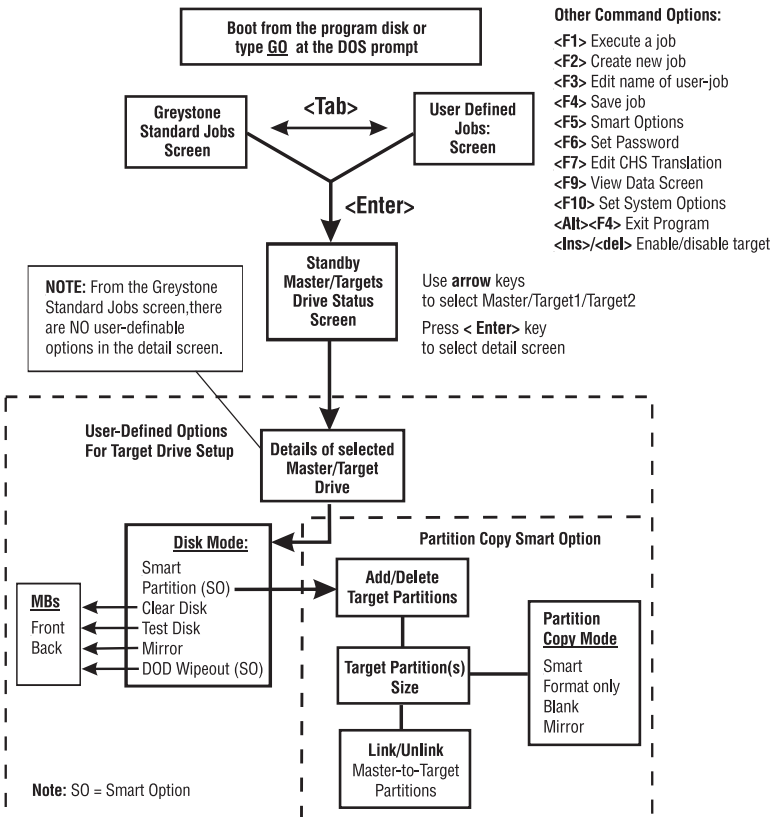
This is a Smart Option. Please refer to *Chapter 5*, page 5-11.

Chapter 4

User-Defined Operations

One of the great features of the D-105 DataFast is that it allows you to create and save user-defined jobs. This chapter will describe the different user-defined options that are available to you when setting up custom disk operations. No changes can be made to the source (master) drive, but you can selectively control (and save) the job operations you wish to run on the target drives.

The following flow diagram provides a basic overview of the program's scheme and key commands.



The following sections describe the user-defined options available to you.

4-1 User-Defined Jobs:

Command key: <Tab>

When you first boot the D-105 (using the program disk), the program will open to the main Greystone Standard Jobs screen. You have the choice of pressing <F1> to automatically run one of the selected job options, pressing <Enter> to view the default auto-set parameter screens before running a job, or pressing the <Tab> key to enter the user-defined job menus. (You can also press <Tab> again at any time to go back to the Greystone Standard Jobs mode.)

Note that the information at the top of all screens shows the command key functions that are available to you from that screen.

“Greystone Standard Jobs” screen after bootup:

Greystone D-105 software version 5.11 Press <F1> to execute job immediately, <Enter> to review job setup. <Tab> to select list of user defined jobs, <F2> to copy job to user list. Press <Alt-F4> to exit program.	
Greystone Standard Jobs:	
Smart Copy	
Mirror Copy	
Test Disk	
DOD Wipeout	
Fri, 29 Jan 1999	08:36:57 AM ●
Status: Select job - use cr keys to browse list.	Cable Select On

Press the <Tab> key to advance to the user-defined jobs screen. Below is the User Defined Jobs screen after pressing <Tab>:

Greystone D-105 software version 5.11 Press <F1> to execute job immediately, <Enter> to review job setup. <F2> create new job <F3> Edit job description <Tab> = Standard jobs Press <Alt-F4> to exit program	
User Defined jobs:	
Default User Defined Job	
Fri, 29 Jan 1999	08:36:57 AM ●
Status: Select job using cursor keys to browse list.	Cable Select On

You will see one highlighted default job called “Default User Defined Job”. Press the <Enter> key.

4-1.1 Default User Defined Job

Command key: <Enter>

Default User Defined Job	
<F1> Start copy, <F7> Edit CHS trans. <F10> = Set system options <Enter> Edit copy options for selected target <V> = Verify previous copy <Delete> = Disable target position <F9> = View data	
Source Drive	Capacity Status
WDC AC3400L	3815 Drive ready
Target Drives	
1 QUANTUM FIREBALL_TM3840A	3682 Drive ready
2 FUJITSU M1638TAU	2452 Drive ready
3 ST5 1080A	1034 Drive ready
4 IBM-DAQA-32160	2014 Drive ready
5 QUANTUM FIREBALL ST6.4 A	6150 Drive ready
Fri, 29 Jan 1999	08:36:57 AM ●
Status File	Ctrl-S/Alt-On

This presents the standby drive status menu screen. From this screen you can view the details of any of the drives by using the cursor arrow keys to highlight-select the drive you want to view or change, then press <Enter>. The following screen example shows the details of the *source* drive with partition information. No changes can be made to the source drive's parameters.

Default User Defined Job	
<Esc> = Return to main screen, , <F10> = Set system options	
Source Model Number: WDC AC3400L	
Serial Number: WD-WT3510266621	
Firmware Rev: 24.39E26	Cylinders: 7752
Megabyte Capacity: 3815	Heads: 16
Total Sectors: 7814016	Sectors/Track: 63
R/W Multi: 16 LBA mode: Yes	ATA PIO Mode: 4
Source Drive partitions	
Size	Cluster usage:
Type	Size
System	Highest #
Used / Total	Used / Total
1 2016 HUGE MSWIN4.1	[64] 12601 9268 64512 (14%)
2 1795 HUGE MSDOS5.0	[64] 1 2 57600 (0%)
Fri, 29 Jan 1999	08:36:57 AM ●
Status Drive ready	Ctrl-S/Alt-On

Number of sectors per cluster Highest cluster number used Total clusters used Total clusters used

The following screen shows the details of the *Target 1* drive.

```

Default: User Defined Job
<Esc> = Return to main screen, , <F10> = Set system options
      <Insert> target partition <Delete> target partition
<F7> = Edit CHS translation parameters <F8> Copy target setup to other targets

Target 1 Model Number: QUANTUM FIREBALL_TM3840A
Serial Number: 396621616730
Firmware Rev: A6B.2000          Cylinders: 7480
Megabyte Capacity: 3682          Heads: 16
Total Sectors: 7539840          Sectors/Track: 63
R/W Multi: 16 LEA mode: Yes     ATA PIO Mode: 4

Source Drive partitions   Target Partition Setup:  Disk Mode: Partition
Size  Type  System                Size  Copy mode
1  2016  HUGE  MSWIN4.1          1  2016=Smart Copy
2  1795  HUGE  MSDOS5.0          2  1662=Smart Copy

Fri, 29 Jan 1999                                08:36:57 AM
Status: Select job-use or keys to browse list.   Cable Select On
    
```

The user can define the copy method to use for the target detail screen. The method to use may be selected using the <Spacebar> to cycle through the Disk Mode options. (Note that the screen options will change with each mode change.)

- | | | |
|-------------|---|---------------------------------|
| Partition | } | <i>These are Smart Options</i> |
| DOD Wipeout | | |
| Smart | } | <i>These are normal options</i> |
| Test Disk | | |
| Mirror | | |
| Clear Disk | | |

Disk Mode: Smart

Selecting the Disk Mode “**Smart**” option will display the drive and source/target partition information. This mode copies the entire source drive to designated targets, keeping the basic source partition structure intact. *If the file system of a source partition is unknown and the source and target drives have matching heads and sector/track configuration, the target partition size will be set equal to the source partition, and the contents will be “partition mirror” copied.* If the file system is known, the target partition size will be automatically adjusted based on the ratio of the capacity of the source drive to the capacity of the target drive. Data will be copied file-by-file, while adjusting target FAT type, FAT size, and cluster size as needed.

No changes can be made using this mode.

```

Default: User Defined Job
<Esc> = Return to main screen, , <F10> = Set system options
      <Insert> target partition
      <F7> = Bit CHS translation parameters
Target 1 Model Number: QUANTUM FIREBALL_TM3840A
      Serial Number: 396621616730
      Firmware Rev: A6B.2000          Cylinders: 7480
      Megabyte Capacity: 3682          Heads: 16
      Total Sectors: 7539840          Sectors/Track: 63
R/W Multi: 16  LEA mode: Yes          PIO Mode: 4

Source Drive partitions      Target Partition Setup:  Disk Mode: Smart
Size  Type  System              Size  Copy mode
1  2016  HUGE  MSWIN4.1          1945  Smart Copy
2  1795  HUGE  MSDOS5.0          1732  Smart Copy

Fri, 29 Jan 1999                      08:36:57 AM
Status: Press <space> to change disk mode      Cable Select On

```

Disk Mode: Test disk

Selecting the “Test disk” option enables you to test the capacity of the drive you specify. This mode will read blocks of data from the selected target drive, save the data in RAM, write a test pattern to the same area of the target disk, read back and verify the test pattern, write the original data back to the disk, and verify that the original data was written back correctly. If any errors occur, the process will be stopped and the errors reported. The test process will be repeated for successive blocks on the disk. The front MB and back MB fields will specify what portion of the disk will be tested in this manner. The default values are set to test the full disk: Front MB = 65535 and Back MB = 0. If you only want to test a portion of the drive, you can specify different begin and end parameters to test.

```

Default User Defined Job
<Esc> = Return to main screen, , <F10> = Set system options
      <Insc> target partition
      <F7> = Bit CHS translation parameters
Target 1 Model Number: QUANTUM FIREBALL_TM3840A
      Serial Number: 396621616730
      Firmware Rev: A6B.2000          Cylinders: 7480
      Megabyte Capacity: 3682          Heads: 16
      Total Sectors: 7539840          Sectors/Track: 63
R/W Multi: 16  LBA mode: Yes          PIO Mode: 4

Source Drive partitions      Target Partition Setup:  Disk Mode: Test disk
  Size  Type  System          Front MB  Back MB
  1  2016  HUGE  MSWIN4.1          65535    0
  2  1795  HUGE  MSDOS5.0

Fri, 29 Jan 1999                      08:36:57 AM .

Status: Press <space> to change disk mode          Cable Select On
    
```

Disk Mode: Mirror

This mode is valid only for target drives which have the same number of heads and sectors per track as the source drive. You may specify front and back megabytes, which set the amount of data copied from the front of the drive (starting with the logical sector 0), and from the back of the drive (ending with the highest logical sector). If the total number of megabytes exceeds the capacity of either the source or target drive, the entire drive will be duplicated. Normally, to duplicate identical drives, you would enter zero for the back megabytes and 65535 (maximum) for the front. This would ensure that the entire drive is copied sector for sector.

Default: User Defined Job					
<Esc> = Return to main screen, , <F10> = Set system options <Insert> target partition <F7> = Bit CHS translation parameters					
Target 1 Model Number: QUANTUM FIREBALL_TM3840A					
Serial Number: 396621616730					
Firmware Rev: A6B.2000			Cylinders: 7480		
Megabyte Capacity: 3682			Heads: 16		
Total Sectors: 7539840			Sectors/Track: 63		
R/W Multi: 16		LBA mode: Yes		PIO Mode: 4	
Source Drive partitions			Target Partition Setup:		Disk Mode: Mirror
Size	Type	System	Front MB	Back MB	
1 2016	HUGE	MSWIN4.1	6555	0	
2 1795	HUGE	MSDOS5.0			
Fri, 29 Jan 1999				08:36:57 AM .	
Status: Press <space> to change disk mode				Cable Select On	

Disk Mode: Clear Disk

Selecting the “**Clear Disk**” option enables you to allocate the area of the drive you want to be erased. The default values are set for the full disk: Front MB = 65535 and Back MB = 0. If you only want a portion of it erased, you can specify different begin and end parameters. Clear Disk will write 0's, or a user-specified pattern to all the selected sectors on the target drive.

Default: User Defined Job					
 = Return to main screen, , <F10> = Set system options					
<Insert> target partition					
<F7> = Edit CHS translation parameters					
Target 1 Model Number: QUANTUM FIREBALL_TM3840A					
Serial Number: 396621616730					
Firmware Rev: A6B.2000		Cylinders: 7480			
Megabyte Capacity: 3682		Heads: 16			
Total Sectors: 7539840		Sectors/Track: 63			
R/W Multi: 16	LBA mode: Yes	PIO Mode: 4			
Source Drive partitions		Target Partition Setup:		Disk Mode: Clear Disk	
Size	Type	System	Front MB	Back MB	
1 2016	HUGE	MSWIN4.1	6555	0	
2 1795	HUGE	MSDOS5.0			
Fri, 29 Jan 1999			08:36:57 AM .		
Status: Press <space> to change disk mode				Cable Select On	

Disk Mode: Partition

This is a Smart Option. Please refer to *Chapter 5*, page 5-7.

Disk Mode: Wipeout

This is a Smart Option. Please refer to *Chapter 5*, page 5-11.

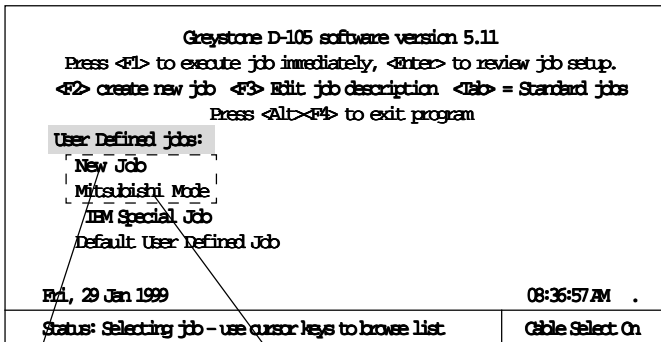
4-2 Other User-Defined Settings

At the top of each screen you will see certain options that can be viewed when a certain function command key is pressed. This section will describe these options.

4-2.1 Create a New Job

Command key: <F2>

To create a new user-defined job, press <F2>. A new job will be created and added to the top of the User Defined Jobs: list screen. You may enter a descriptive job name at this point, or press <Esc> to keep the default name. After typing a new filename, press <Enter> to save the name and then press <Enter> again to edit the new job setup.



New job added

Other user-defined jobs

4-2.2 Edit User Defined Job Name

Command key: <F3>

You can edit the name description of jobs in the User Defined Jobs: list (see above screen). To edit, highlight a current job description, and press <F3>. You may then change the description and press <Enter> to save the new description, or press <Esc> to cancel any edits and restore the previous description.

4-2.3 Edit CHS Translation

Command key: <F7>

You can edit the cylinders, heads, and sectors/tracks translation settings by pressing <F7>. The purpose is to allow FAT16 to address drive larger than 504MB. The maximum values that can be set are 64 heads, 63 sectors/track and 1024 cylinders. This option can be tricky to set, so it is recommended that you always use the “Automatic” setting. However, there are three options available. Use the <Spacebar> to select the option.

None No translation is performed. Drives with more than 1023 cylinders will use LBA (Logical Block Address) mode in the partition sector.

Automatic Automatic translation will halve the cylinder count and double the head count until the number of cylinders is less than or equal to 1023. This is the recommended default setting.

Manual The number of heads and sectors per track may be specified directly and the drive will be instructed to reset its internal translation parameters to these values.

Default: User Defined Job		
Target 1 translation parameters		
<ESC> = Exit		
	Translation mode:	Automatic
	Native	Translated
Heads:	16	128
Sectors/track:	63	63
Cylinders:	7480	935
Capacity:	3683 MB	3682 MB
Fri, 29 Jan 1999		08:36:57 AM .
Status: Press <space> to change translation mode		Cable Select: On

4-2.4 View Data

Command key: <F9>

The following lists the function of the keys you can use to view drive data from the <F9> standby screen:

PageDown	Move ½ sector towards end of disk
PageUp	Move ½ sector towards front of disk (sector 0)
<F11>	Cycles through sector smart display modes
+	Move one sector towards end of disk
-	Move one sector towards front of disk (sector 0)
Up Arrow	Move cursor to LBA sector input field
Down Arrow	Move cursor to CHS cylinder input field
Left Arrow	Move cursor to the left in the LBA/CHS input fields
Right Arrow	Move cursor to the right in the LBA/CHS input fields
Enter	Accept LBA/CHS user input
Alt-F	Enter in search string
Alt-G	Search for string starting at current sector
F3	Search for string starting at current sector
F7	Save current sector to disk
Tab	Show same sector on next disk
Shift-tab	Show same sector on previous disk

<F9> allows you to look at the data that exists on a drive when you are in the Standby Drive Status screen. Highlight-select a drive and press <F9> to view the data. Only half the sector can be seen on the screen at a time, but you can save the whole sector's data to a floppy disk by pressing <F7>. The data will be saved to a text file with the same name as the sector number being saved.

To view a specific area of the drive, you can set the cylinder, head, sector or LBA sector locations. The LBA (Logical Block Address) runs in consecutive numbers.

The following is a partial sample of what you might expect to see for viewing the drive data when <F9> is pressed.

```

Disk1 <Alt-F>= Edit sector                               <Alt-C>=Exit
<Alt-F1> = Display as partition table                    <Alt-F7> = Save display to file
LEA Sector:      0
Cylinder:        0      Head:      0      Sector:    1

0000: 33 C0 8E D0 BC 00 7C FB 50 07 50 1F FC EE 1B 7C  X33< -{-}|>|
0010: BF 1B 06 50 57 B9 E5 01 F3 A4 CB BE BE 07 E1 04  ?.F0e.s3C>.1.
0020: 38 2C 7C 09 75 15 83 C6 10 E2 F5 CD 18 8B 13 8B  8,|u.F.b.M
0030: EE 83 C6 10 49 74 16 38 2C 74 F6 BE 10 07 4E AC  rF.t.8,t>.N.A<t.
0040: 3C 00 74 FA BB 07 00 B4 0E CD 10 EB F2 89 46 25  <.tz:..4M.krF
0050: 3A C4 75.....

Fri, 29 Jan 1999                                     08:36:57 AM
Status: Displaying data
    
```

Starting byte number

Data byte

Data byte display

<Alt-F1> allows you to edit the sector data. Use the arrow keys to select the bytes to edit. Type in the new hexadecimal value for the edited byte. Press <Enter> to accept new value. When editing is complete, press <Esc>.

Select 'Yes' to save changes, or 'No' not to save and exit the edit mode, or 'Cancel' to continue editing.

```

Editing sector: 0
Press <Esc> to exit

0000: 33 C0 8E D0 BC 00 7C FB 50 07 50 1F FC EE 1B 7C  X33< -{-}|>|
0010: BF 1B 06 50 57 B9 E5 01 F3 A4 CB BE BE 07 E1 04  ?.F0e.s3C>.1.
0020: 38 2C 7C 09 75 15 83 C6 10 E2 F5 CD 18 8B 13 8B  8,|u.F.b.M
0030: EE 83 C6 10 49 74 16 38 2C 74 F6 BE 10 07 4E AC  rF.t.8,t>.N.A<t.
0040: 3C 00 74 FA BB 07 00 B4 0E CD 10 EB F2 89 46 25  <.tz:..4M.krF
0050: 3A C4 75.....

Fri, 29 Jan 1999                                     08:36:57 AM
Status: Displaying data
    
```

Data byte

Data byte display

<F11> allows the sector data to be displayed in different ways. Press <F11> to scroll through the following types of data display screens.

Partition Table Display Screen:

Use the arrow keys to highlight the start of a partition. Push <Enter> to jump to the start of the partition. If the file system is a FAT file system, the D-105 will automatically display the information in the appropriate format.

```

Drive1 <Alt>= Edit sector                                <Esc>=Exit
<F11> = Display as boot sector                          <F7>=Save display to file
LEA Sector:      0
Cylinder:      0  Head: 0  Sector: 1
Partition sector data

          Start          End          LBA      LBA
#      Type A      Cyln  Head  Sec  Cyln  Head  Sec  Start  Length
1      FAT32  *         0    1    1   933   254   68      68 15004647
2      EXT          934    0    1   934   254   68 15004710 16065
3      Unused         0    0    0     0    0    0         0     0
4      Unused         0    0    0     0    0    0         0     0

80 01 01 00 0B FE FF A5 3F 00 00 00 E7 E3 E4 00
00 00 C1 A6 05 FE FF A6 25 F4 E4 00 C1 3E 00 00
00 00 00 00 00 00 00 00 00 00 00 00 00 00 00
00 00 00 00 00 00 00 00 00 00 00 00 00 00 00

          Computed link sector:      6
          Computed LBA extended partition base: 3

Fri, 29 Jan 1999                                08:35:7AM .
Status: <Enter> to follow link, <Backspace> to go back

```

Boot Sector Display Screen:

Use the arrow keys to highlight the root directory address. Press <Enter> to go to the root directory sector screen.

Drive 1	<Alt-E> = Exit sector	<Esc> = Exit
<F11> = Display as boot sector	<F7> = Suedisplay to file	
IEA Sector:	63	
Q/links:	0	Head: 0 Sector: 1
BytesPer Sector:	512	SectorsPerCluster: 8
ReservedSectors:	32	NumberOfFATs: 2
MediaDescriptor:	F8h	TotalSectors: 15004647
SectorsPerTrack:	63	SectorsPerFAT: 14625
HiddenSectors:	63	Heads: 255
PhysDrive:	128	CurrentHead: 0
Signature29:	29h	Serial_number: 306711D5
VolLabel:	NO NAME	SystemID: FAT32
FAT32 Infor:		ExtFlags: 0000h
FS_Version:	0	RootDirStartClus: 2
FSInfoSec:	1	ExtUpBootSec: 6
[Root dir. address]	29345	[Cluster 0 address] 29329
Wed, 29 Jan 1999		08:36:57AM .
Status: <Enter> to follow link, <Backspace> to go back		

Directory Sector Display Screen:

To view root directory files: Use the arrow keys to highlight the *Starting Cluster* of any data file. Press <Enter> to display file data, or to enter subdirectory where you can highlight the start of any data file to display the file data.

To view subdirectory files: Use the arrow keys to highlight the *directory*, press <Enter>, then highlight the *Starting Cluster* of any data file to display the file data. The <Backspace> key can be used to move back through the sectors that were previously selected.

Drive 1 <Alt-F1> = Edit sector				<ESC> = Exit
<F11> = Display as raw data				<F7> = Switch display to file
LBA Sector: 29345				
Cylinder: 31 Head: 0 Sector: 51				Directory Info
Filename		Start Cluster	Size	
SUHLOG	DAT	3	5166	
BOOTLOG	PRV	5	24721	
BOOTLOG	PRV	12	25054	
COMMAND	COM	19	93812	
DETLOG	OLD	42	1019	
AUTOEXECBAT		43	244	
CDROM	(Directory)	44	0	
DOS	(Directory)	53	0	
CONFIG	ORG	261	55	
AUTOEXECORG		262	12	
CONFIG	DOS	264	45	
CONFIG	SYS	265	103	
DETLOG	TXT	266	71659	
MSDOS	SYS	284	1650	
~MSSETUPT	(Directory)	285		
Link Sector: 29353				
Fri, 29 Jan 1999				08:36:57 AM .
Status: <Enter> to follow link, <Backspace> to go back				

4-2.5 Set System Options

Command key: <F10>

Press <F10> to view the System Options screen, which allows you to set several global parameters that are common to all jobs. Use the cursor keys to select a parameter and type in a new value, or press the <Spacebar> to enable an option. Press the <Alt-F10> keys to display statistics of the total number of jobs run, total megabytes copied, etc. (since day one). Any changes may be undone by using the <F4> key.

System Options Press <F4> to undo changes, <Esc> to exit Press <Alt-F10> to display system statistics	
[5]	Drive power-up delay (seconds)
[5]	Drive power-settling time (seconds)
[20]	Drive command timeout (seconds)
[7]	Drive spindown time (seconds)
[X]	100% read-back verification
[]	1% read-back verification
[]	Quick verify with ATA Read Verify
[]	50% Verification, read-back or Quick
Data logging options:	
[]	Log all jobs
[]	Log failed jobs
[]	Log details
[]	Display filenames during Smart Copy
[]	Read/Write Multiple Sectors
[]	Enable Cable select
[]	Enable LBA translation
[]	Enable Interrupt 13 translation
[]	Start with user jobs screen
Fri, 29 Jan 1999 08:36:57 AM .	
Status: Editing system options	

Definitions of the System Options are listed below:

Drive control options:

Drive power-up Delay

When the disk drives are powered up, a time delay is used to prevent simultaneous drive spin-up power surges from overloading the power supply. This parameter sets the time delay in seconds between each drive spin-up. (Default is 5 sec.)

Drive power-up settling time (seconds)

This is a time delay used after power is applied to allow the power to settle and the drive to come up to speed before further interrogation and recalibration of the drive. (Default is 5 sec.)

Drive command timeout

This is the time allowed for a drive to respond to a command before declaring a timeout error. If the drive does not respond within the allowed time, it has failed – indicating a problem, such as not connected. Most drives will respond in 5 seconds. (Default is 15 sec.)

Drive spindown time (seconds)

This is the time allowed for spin down after power is turned off to the drives and before the '*Safe to remove drive*' message is displayed. (Default is 7 sec.)

Data verification options:**100% read-back verification**

When selected, 100% of the data on the target drives is read back and compared to the source drive after the duplication process.

1% read-back verification

When selected, 1% of the data on the target drives is read back and compared to the source drive after the duplication process.

Quick verify with ATA Read Verify

If this option is selected, an IDE Read-Verify command will be performed after duplication process is complete. Unlike the normal verify option, no data is transferred from the disk during the quick verify operation. The IDE drive does an internal check on data integrity and returns a “good” or “bad” status indication only. If the normal verify operation is ON, it will override this quick verify option.

<User % specified> Verification, read-back or Quick data logging options

When selected, the user-specified percentage of the data on the selected target drives is read back and compared to the source drive after the duplication process. The user may specify the % to be verified by using the arrow keys to highlight the percentage amount, then type in the % for verification. (Default is 50%)

Data logging options:

These options set the type of job information that you want to be saved in the LOGFILE.TXT file for future tracking. Note that the information saved in this file will loop back and copy over the oldest data when there is no more disk space.

Log all jobs

When this option is checked, all jobs will be recorded in the LOGFILE.TXT file. The following information is logged:

- Date and time
- Type of copy
- Source and target drives
- Status of copy operation
- Total MBytes copied
- Time it took to do copies
- Startup and shutdown times of the program

Logs failed jobs

When this option is checked, and the “Log all jobs” option is unchecked, only failed jobs will be recorded in the LOGFILE.TXT file. (A failed job can be a job that is halted before completion. The same information is displayed as in the “Log all jobs” option.

Log details

When this option is checked, additional information about drives is logged.

Other Option:

Display filenames during Smart Copy

This setting affects the Smart Copy job screen as a job is running. If not selected, filenames as they are being copied will NOT be displayed. Only the % of copying status will show.

Read/Write Multiple Sectors

If Read/Write Multiple errors occur during duplication, this option allows you to disable the ATA defined “Read Multiple” and “Write Multiple” functionality for drives that do not correctly support it. The duplication process will take a little longer with this option disabled.

The following is a sample printout of a portion of the LOGFILE.TXT set to print “Log all jobs” and “Log all details”:

(SAMPLE of Failed Jobs)

```
->Program shutdown at Fri May 23 09:01:57 1997

**Fri May 23 09:01:53 1997
  Smart Copy
Source:   TOSHIBA MK1926FCV           S/N: Z6C16264
Target 1: TOSHIBA MK1926FCV           S/N: Z6C16279
          Status: Cancelled by user
Total MB copied = 5
Elapsed time = 0:07 ( 2 failed copies)
```

(SAMPLE of Good Jobs)

```
** Fri May 23 09:01:13 1997
  Smart Copy
Source:   TOSHIBA MK1926FCV           S/N:Z6C16264
Target 1: TOSHIBA MK1926FCV           S/N:Z6C16279
          Status: Operation complete. 118 MB copied.
Target 2: TOSHIBA MK1925FCV           S/N:Z6C16281
          Status: Operation complete. 118 MB copied.
Total MB copied = 235
Elapsed time = 5:31

-> Program startup at Fri May 23 08:55:05 1997
== Log file created: Fri May 23 08:55:05 1997
```

The following is a sample printout of a portion of the LOGFILE.TXT set to print “No details” and “Log failed jobs”:

```
**Fri May 23 08:53:53 1997
  Smart Copy
Total MB copied = 6
Elapsed time = 0:08 ( 2 failed copies)

-> Program startup at Fri May 23 08:52:15 1997
== Log file created: Fri May 23 08:52:15 1997
```

The following is a sample printout of a portion of the LOGFILE.TXT set to print “Log failed jobs” and “Log details”:

```
** Fri May 23 06:55:03 1997
  Mirror Copy
Source:   TOSHIBA MK1926FCV           S/N:Z6C16264
Target 1: TOSHIBA MK1926FCV           S/N:Z6C16279
          Status: Bad source drive
Target 2: TOSHIBA MK1925FCV           S/N:Z6C16281
          Status: Bad source drive
Total MB copied = 199
Elapsed time = 69:33 ( 2 failed copies)

** Thu May 22 16:04:09 1997
  Smart Copy
Source:   TOSHIBA MK1926FCV           S/N:Z6C16264
Target 1: TOSHIBA MK1926FCV           S/N:Z6C16279
          Status: Bad source drive
Target 2: TOSHIBA MK1925FCV           S/N:Z6C16281
          Status: Cancelled by user
Total MB copied = 44
Elapsed time = 1:17 ( 2 failed copies)
-> Program startup at Fri May 23 08:55:05 1997
== Log file created: Fri May 23 08:55:05 1997
```

Enable Cable Select

When selected, allows all drives to use 'Cable Select' mode on the D-105.

NOTE: For D-102 models, the Cable Select mode must be individually set using the hardware jumpers adjacent to the 40-pin connector for each drive. To enable Cable Select on the D-102A, place a jumper on the two pins closest to the power connector.

Enable LBA Translation

When enabled, this option will ensure the translated heads value will be a power of 2. When disabled, the translated heads value may or may not be a power of 2.

Enable Interrupt 13 Translation

When enabled, drives larger than 4GB with 16 heads will automatically have their head count reduced to 15 heads for translation purposes.

Start with user jobs screen

When selected, the program will display the user job screen on power up.

4-2.6 Enable/Disable Target Drive

Command keys: <Ins>

A target drive may be disabled (powered down) by selecting the drive in the Standby screen and pressing the key. This option may be used when you need to copy to fewer targets. To re-enable a disabled target (or to reinitialize a target drive that is already powered up), select the drive and press the <Ins> key.

```

Smart Mode
<F1> Start copy, <F7> Edit CHS trans. <F10> = Set system options
<F8> Edit copy options for selected target
<V> = Verify previous copy <Delete> = Disable target position <F9> View data

Source Drive                      Capacity Status
SIS1080A                          1034 Drive ready

Target Drives
1 QUANTUM FIREBALL_TM3840A        3682 Drive ready
2 FUJITSU M1638TAU                2452 Drive ready
3 SIS 1080A                       1034 Drive ready
4 IBM-DAQA-32160                  2014 Drive ready
5 QUANTUM FIREBALL ST6.4 A        6150 Drive ready

Fri, 29 Jan 1999                      08:35:57 AM .
Status: Idle

```


Chapter 5

Smart Options

The *Smart Options* suite of utilities is designed to make your Datafast hard disk duplicator more productive and useful. The Smart Option utilities and their functions are listed below. (Note: the fill-in boxes are provided as a handy reference for recording the required Smart Option key number for unlocking each Smart Option purchased.)

When calling Greystone to activate a Smart option, please have the *Internal Serial Number* displayed in the “Enable Smart Options” screen <F5> available to give to the Greystone representative.

Wipeout Smart Option: performs the Department of Defense Sanitize operation eradicating all information from the hard disk.

Smart Option key:

Database Smart Option: records all duplication information in a database format that can be imported into many popular database programs for analysis and job tracking.

Smart Option key:

NTFS Smart Option: copies only the data on an NTFS volume, which greatly reduces the time required to duplicate disks with the Microsoft Windows NT file system.

Smart Option key:

Partition Smart Option: lets the system manager or operator select the partitions and the order of the selected partitions that can be duplicated from the source disk drive to the target disk drive.

Smart Option key:

Smart Options Information Box

Note that at the startup of your Datafast Hard Disk Duplicator, a dialogue box listing the current *enabled* and *disabled* Smart Options will be displayed.

5-1 How to Enable Smart Options

Any of the Smart Options can be "unlocked" for immediate use by ordering directly from Greystone Peripherals. Each Smart Option requires an *unlock* number key in order for it to be enabled. To place your order and obtain an *unlock* key, call

Greystone Peripherals at **(408) 866-4739**,

and ask for your sales representative, or ask for Sales, if you do not know your sales representative.

The unlock number is keyed to the *internal* serial number of the duplicator, which can be found on the bottom line of the **Key Number** entry dialogue box of the Smart Option menu. Please make a note of this internal number, plus the hardware serial number (located on sticker on the back of your duplicator) before calling Greystone.

Refer to the following steps to enable Smart Options.

1. Insert the DataFast software diskette into the floppy drive and start the DataFast duplicator.
2. Smart Options can be enabled from the **Smart Option** menu. To activate the **Smart Option** menu, press <F5> from the **Jobs** menu screen.
3. When the **Smart Option** menu is displayed, use the up and down arrow keys to move the cursor to the desired option to be enabled.
4. Press the <Space bar> to enable the selected Smart Option.
5. Record the internal serial number displayed on the bottom line of the Key Number entry box of the Smart Option screen. Also record the serial number located on the back of the duplicator.
6. Call Greystone Peripherals at (408) 866-4739 and ask for a Sales Rep to place order and obtain the correct Smart Option Key for the option you wish to enable. *Note: a fill-in box is provided on the previous page as a handy reference for you to write in the Smart Option Key number for unlocking each purchased Smart Option.*
7. Type in the Smart Option Key number in the Key Number entry dialog box of the Smart Option screen. If the key is accepted, a

check mark will appear in the box next to the selected Smart Option.

8. Press the <Esc> key to exit back to the Jobs menu.

5-2 Smart Options Operations

The following sections describe the Smart Options

5-2.1 NTFS Smart Option

The NTFS Smart Option performs a mirror copy of only the data on an NTFS partition, from the source to the target drives. A 2GB partition requires approximately 8 minutes to duplicate and verify in the standard NTFS Partition Mirror copy mode that is part of all Greystone IDE duplication products. The *NTFS Smart Option* will enhance the duplication process by only copying the data from the source drive to the target drives and NOT copying blank sectors. A typical 2GB partition with 500 MB of actual data will take less than 2 minutes to duplicate and verify using the NTFS Smart Option. About 6 minutes is saved with the NTFS Smart Option. Using a NTFS source drive with a data load that is 20% the size of the NTFS partition, it is possible to duplicate approximately 25 drives using the NTFS Smart Option in the same time it takes to duplicate 5 drives using the standard NTFS Partition Mirror copy.

5-2.2 Database Smart Option

The Database Smart Option records process information in a delimited file for importation into many popular database applications. The delimiter defaults to a comma, but may be any desired character, such as a tab or semi-colon.

Record types

The following is a list of database records created using the Database Smart Option.

Database File Creation

Field 1 - Record type number

Field 2 - Blank

Field 3 - Date

Field 4 - Time

Field 5 - Record description string

Session Start

- Field 1 - Record type number
- Field 2 - Last used Job Number
- Field 3 - Date
- Field 4 - Time
- Field 5 - Record description string
- Field 6 - Software version number

Session End

- Field 1 - Record type number
- Field 2 - Last used Job Number
- Field 3 - Date
- Field 4 - Time
- Field 5 - Record description string

Job Start

- Field 1 - Record type number
- Field 2 - Job Number
- Field 3 - Date
- Field 4 - Time
- Field 5 - Job Name
- Field 6 - Number of active targets
- Field 7 - Verification percentage
- Field 8 - PIO Mode
- Field 9 - Read/Write multiple sector count

Job End

- Field 1 - Record type number
- Field 2 - Job Number
- Field 3 - Date
- Field 4 - Time
- Field 5 - Record description string
- Field 6 - Total megabytes copied
- Field 7 - Total elapsed time in seconds
- Field 8 - Number of failed targets

Drive Description

- Field 1 - Record type number
- Field 2 - Job Number
- Field 3 - Blank
- Field 4 - Blank
- Field 5 - Drive Number
- Field 6 - Source/Target drive indicator
- Field 7 - Drive Identification string
- Field 8 - Drive Serial Number
- Field 9 - Drive Status - 1-disabled, 0-good copy, -1-drive error
- Field 10 - Megabytes copied
- Field 11 - Copy result string

Event

- Field 1 - Record type number
- Field 2 - Job Number
- Field 3 - Blank
- Field 4 - Blank
- Field 5 - Drive Number
- Field 6 - Source/Target drive indicator
- Field 7 - Last LBA sector number
- Field 8 - Last drive command
- Field 9 - Number of retries
- Field 10 - Last command descriptive string
- Field 11 - Last section descriptive string
- Field 12 - Last sub-section descriptive string

Files Copied

- Field 1 - Record type number
- Field 2 - Job Number
- Field 3 - Blank
- Field 4 - Blank
- Field 5 - Record description string
- Field 6 - Number of good files copied
- Field 7 - Number of deleted files skipped

5-2.3 Partition Mode Smart Option

The Partition Mode Smart Option can be used to choose one or more partitions from the source drive to be duplicated to the target drives. In addition to choosing one or more partitions, the partitions can also be resized and/or reordered on the target drives. Each target drive configuration can be determined independent of the other target drives. With this option, a source drive can be constructed containing many different software loads, each of which can be duplicated individually to target drives.

When in the Detail mode screens, the parameters shown in this screen can be user-defined using the **DataFast Partition Smart Option**. The same options apply if you had selected one of the other *Target* drives. (The shaded boxes indicate the user-definable fields explained in section 4-1.1.)

```

Default user Defined job
<Esc> = Return to main screen, , <F10> = Set system options
      <Insert> target partition <Delete> target partition
<F7> = Edit CHS translation parameters <F8> Copy target setup to other targets

Target 1 Model Number:  QUANTUM FIREBALL_TM3840A
      Serial Number:    396621616730
      Firmware Rev:    A6B.2000           Cylinders: 7480
      Megabyte Capacity: 3682             Heads: 16
      Total Sectors:   7539840           Sectors/Track: 63
R/W Multi: 16  LBA mode: Yes           ATA PIO Mode: 4

Source Drive partitions      Target Partition Setup:  Disk Mode: Partition
      Size  Type  System                Size  Copy mode
1  2016  HUGE  MSWIN4.1          1  2016=Smart Copy
2  1795  HUGE  MSDOS5.0         2  1662=Smart Copy

Fri, 29 Jan 1999                                08:36:57 AM
Status: Select job-use or keys to browse list.    Cable Select On
    
```

From the “Detail mode” menu screen (displayed above), the Partition Smart Option provides features that allow you to change the factory set values for your custom needs. The following sections describe how to use these advanced features.

The “**Disk mode:**” option enables you to switch to the desired job operation (listed below) by using the **<Spacebar>** to select. (Note that the screen options will change with each mode change.)

- | | | |
|-------------|---|---------------------------------|
| Partition | } | <i>These are Smart Options</i> |
| DOD Wipeout | | |
| Smart | } | <i>These are normal options</i> |
| Test Disk | | |
| Mirror | | |
| Clear Disk | | |

Disk Mode: Partition

When in the “**Partition mode**”, you can change the partition values that were initially set by “Smart Copy” mode. The default settings show the size of the first partition on the *source* drive and all partitions on the *target* drives are proportionately sized.

The Partition mode allows you to:

- set the number of partitions on a target drive (up to 10 partitions)
- manually adjust the size of the partitions on the target drives
- set the source-to-target partition link for duplication
- set each partition’s Copy mode: Format only, Blank, Smart Copy, or Mirror Copy

Adding/Deleting Partitions

Command keys: <Ins>

You can easily add or delete partitions on the target drive by using the <Ins> and keys. To add a new target partition, use the cursor keys to select an existing partition “Size” field and press the <Ins> key. A new partition line will be added to the bottom of the list of previously defined partitions (if any), and the cursor will be moved down automatically to select the new partition where you can set its parameters.

You can add up to ten (10) partitions. Each partition will be automatically configured in evenly distributed sizes.

To delete a partition, use the cursor keys to select the “Size” field of the partition to be removed. Then, press the key.

Setting a Partition Size

To change a partition size, use the arrow keys to highlight the desired partition’s **Size** field on the target drive. Manually type in the desired partition size in megabytes. The partition size must be in a range acceptable to the file system that is to be duplicated on it.

File System Types:

Before you change the partition size, you should review the following information on file system types. The maximum and minimum size allowed for a partition can vary, depending on the file system you are using.

- | | |
|-------|---|
| FAT16 | Cannot access partitions greater than 2GB.
(Used by all versions of DOS, Windows 3.1 and Windows 95A.) |
| FAT32 | Allows drives greater than 2GB to contain a single partition; partitions cannot be less than 512MB.
(Used by Windows 95B.) |
| FAT12 | Basically the same as FAT16, but for smaller drive partition sizes up to 64MB. |
| NTFAT | Cannot access partitions greater than 4GB.
(Used by all versions of Windows NT.) |

Note that as you change a partition size, other partition sizes will be adjusted to proportionate allocations determined by the remaining amount of space on the drive .

Setting the Partition Copy Mode

You can set the partition's "Copy Mode" by highlighting its "Copy mode" field and pressing the <Spacebar> to select one of the following modes:

Partition *Smart* copy mode

This mode supports FAT32, FAT16, FAT12, NTFAT and NTFS source partitions. It will copy any size FAT partition to any size target partition that is within the limits of the source file system, copying file-by-file, adjusting the boot sector, directories and FATs accordingly. Erased files, marked bad sectors and unused sectors (off the master partition) are not copied. Windows 95 long filename information is copied. (The copying will automatically fall back to partition Mirror mode if the source partition file system is unknown.)

Partition *Blank* mode

This mode will create a partition table entry, but will not copy any data.

Partition *Format Only* mode

This mode creates an empty partition with an empty root directory and FAT. Either FAT16 or FAT 32 formats may be copied. In order for a formatted partition to be bootable, a bootable partition of the same type must exist on the source drive. The source drive must contain the format information for FAT16 or FAT32. A FAT16 source cannot be used to create a FAT32 target and vice-versa.

Partition *Mirror* mode

This mode copies to a target partition in a manner similar to the disk Mirror mode, where the source and target heads and sectors per track configuration must be the same, and sectors from the selected source partition are copied directly to the target partition. It is different from the Disk Mirror Copy mode in that the user-defined front and back megabytes copying option is not allowed. The target partition size will automatically be set equal to the source partition size.

Linking Source-to-Target Partitions

Command keys: <Ins>

Unless you are using Disk Mode: Smart, a source partition must always be “linked” to a target partition to where it will be copied to.

- If you add partitions, you must remember to unlink them from the original source/target relationship.
- The “Copy mode” setting for partitions that are not linked must be set to “Blank”.

To link source/target partitions

Move the cursor to the “**Size**” field of the target partition to be linked, then press the cursor <left-**arrow**> key. Then, use the up and down arrow keys to select the desired source partition and press the <Ins> key to set a link. The cursor will jump back to the “**Size**” field of the target partition and an *arrow* will be displayed showing the link between the selected source and target partitions.

To remove a link

Move the cursor to the “Size” field of the target partition you wish to unlink, then press the cursor <left-arrow> key. Then, press the to unlink. Note that the arrow indicating the link should disappear.

Use the <F8> key to copy the setup to other targets.

Once you have verified all these parameters, you can press <Esc> to return to the Standby screen to set up other targets or perform other options. Press <F4> to save the current job settings under the user-defined job name.

```

Default: User Defined Job
<F1>=Start copy <F7>=Edit CHS trans. <F10>=Set system options
<Enter>=Edit copy options for selected target
<V>=Verify previous copy <Delete>=Disable target <F9>=View data
<F4>=Save current drive settings

Source Drive                               Capacity Status
WDC AC3400L                                7340 Drive ready

Target Drives
1 QUANTUM FIREBALL_TM3840A                7340 Drive ready
2 FUJITSU M1638TAU                        7340 Drive ready
3 SI5 1080A                                7340 Drive ready
4 IBM-DAQA-32160                          7340 Drive ready
5 QUANTUM FIREBALL ST6.4 A                7340 Drive ready

Fri, 29 Jan 1999                          08:36:57 AM
Status File                               @@@@
    
```


5-2.4 DOD Wipeout Smart Option

The Department of Defense has determined a procedure for sanitizing a hard disk drive. This procedure is specified in document DoD 5220.22-M Chapter 8 Section 3 (8-306).

The Wipeout Smart Option Procedure

The disk sanitization is performed in the following steps:

- Overwrite all addressable locations with a character
- Overwrite all addressable locations with the complement of the character
- Overwrite all addressable locations with a random character
- Verify all addressable locations were overwritten with the random character

Chapter 6

Password Protection

Password protection is used to control what jobs can be executed. This feature is particularly important for guaranteeing the integrity of a job when other users may be involved with the duplicating process. A password can be set so only a selected job can be executed. No other function can be performed without the password.

From any screen, press <F6> to set or clear the password. If no password has previously been set, pressing <F6> will display the following Set Password screen:

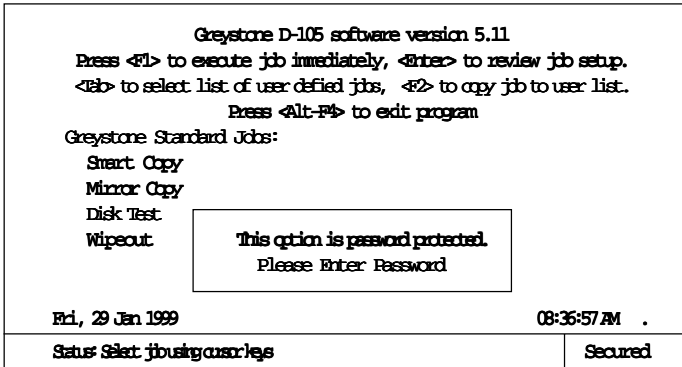
```

                                Greystone D-105 software version 5.11
Press <F1> to execute job immediately, <Enter> to review job setup.
<Tab> to select list of user defined jobs, <F2> to copy job to user list.
                                <Tab> = Standard jobs
                                Press <Alt-F4> to exit program
Greystone Standard Jobs:
Smart Copy
Mirror Copy
Disk Test
Wipecut
                                **** Set Password ****
                                Please Enter Password

Fri, 29 Jan 1999                                08:36:57 AM
-----
Status: Select job using cursor keys
```

Set the password by typing up to 12 alpha/numeric characters. Press <Enter> to set.

To turn off password protection, press <F6> and enter the current password. When asked to enter a new screen password, press the <Enter> key to clear.



HINT: Steps to allow only one job to be executed:

1. At the standard job screen, select the job to be executed.
2. Press <F2> to copy job to User Job list.
3. Highlight the Default User Defined Job and press the key to remove the Default User Defined Job from the User Job list.
4. Press <F10> to go to System Options screen.
5. Select the '**Start with user jobs screen**' option and press <Esc> to return to User Job screen.
6. Set the password. This will allow only the job copied to the User Defined Jobs menu to be executed.

Chapter 7

Questions & Answers

This chapter covers some of the basic questions and answers that may help you regarding the use of the D-105 duplicator.

7-1 General

Q: When calling Tech Support, what information should I have handy?

A: The *serial number* from the back of the duplicator. The *version of software* when the duplicator was purchased.

Q: How do I change the Time and Date on the duplicator?

A: Exit the duplication software by pressing the <Alt> and <F4> keys. At the DOS prompt, type **TIME** to change the time. Type **DATE** to change the date. After the time and date are set, type **GO** to restart the duplication software.

Q: I want to duplicate a multiple partition disk drive.

A: From the “Greystone Standard Jobs” screen select “Smart Copy”. The target drive will contain the same partition structure as the source drive. The partition sizes on the source drive will be adjusted to fit onto the target drive. For example, given a source drive with three partitions using 40%, 35% and 25% of the disk, the target drive will also be partitioned with three partitions that use 40%, 35% and 25% of the disk. When a FAT16 partition on a target disk will be larger than 2 GB, the partition is limited to 2 GB and additional partitions are allocated on the target drive. If more control over partitioning is desired, press the <Tab> key from the Greystone Standard Jobs screen to go to the User Jobs screen and create a new user job, where all the partition allocations can be controlled by the user.

Q: What happens if an error is detected on a target drive or source drive during the duplication process?

A: If the error is detected on the source drive, the duplication process will halt and an error box with the detected error will be displayed. If the error is detected on a target drive, the drive is disabled and the duplication process continues. At the end of the duplication process the drive with the error is reported as a bad drive and the error is logged to the log file if error logging is enabled.

Q: When should I connect the disk drives to the D-105?

A: Greystone Peripherals recommends starting the D-105 and waiting for the “Greystone Standard Jobs” screen to appear before connecting the master and target drive(s).

Q: When I duplicate my Windows 95 1.6 GB disk drive to a 6 GB disk drive, I end up with three partitions on the 6 GB disk drive. I only want one partition on the 6 GB disk drive. What should I do?

A: Your Windows 95 1.6 GB disk is formatted with the ‘FAT16’ file system. The FAT16 file system supports partitions up to 2 GB. When duplicating the FAT16 file system, the target disk is automatically partitioned into 2 GB partitions. In other words, a 6 GB disk will be partitioned into three 2 GB partitions. This is a limitation of the FAT16 file system. A possible solution is to obtain the FAT16-to-FAT32 converter from the Microsoft® Web site and upgrade the source disk drive to the FAT32 file system. The FAT32 file system will support a single partition on any size disk drive.

Q: I want to duplicate NTFS, can I do it?

A: Yes. The NTFS partition on the target disk drive will be the same size as the partition on the source drive. The remaining space on the target drive is available for allocation using FDISK or Disk Administrator. Target drives must be the same size, or larger than the source drive.

Q: How do I change my screen colors?

A: You can change the screen colors by editing the **Hardware.ini** file on the D-105's program disk. **REMEMBER: ALWAYS MAKE A BACKUP COPY OF THE BOOT DISK BEFORE MAKING ANY CHANGES TO THE BOOT DISK.** Set "ColorDisplay = 1" to enable color display. Each screen item's foreground and background color can be set. The color is set using a two digit number, the first digit is the background color and the second digit is the foreground (text) color. The colors are assigned to the digits as follows:

0 - Black	4 - Red	8 - Grey	C - Lt Red
1 - Blue	5 - Magenta	9 - Lt Blue	D - Lt Magenta
2 - Green	6 - Brown	A - Lt Green	E - Yellow
3 - Cyan	7 - White	B - Lt Cyan	F - Lt White

Q: How do I contact Greystone Peripherals?

A: For Technical Support call: **(408) 866-4739**
 Monday - Friday
 9:00 a.m. to 5:00 p.m. PST

For Sales, call toll free: **(800) 600-5710** or **(408) 866-4739**

To order by Fax call: **(408) 866-8328**

Q: Does Greystone Peripherals, Inc. have a World Wide Web page?

A: Yes. Greystone Peripherals, Inc. can be found on the World Wide Web at <http://www.grystone.com>. Check our Web site often for exciting new product announcements, information about our existing product lines and product upgrade information.

7-2 Smart Options

Q: How do I activate a Smart Option?

A: Press <F5> to activate the Smart Option menu screen. Using the up and down arrow keys select the Smart Option you want to activate. Push the <Space bar> to activate the Smart Option. When the Smart Option Key entry box appears, enter the Smart Option Key and push the <Enter> key. If the Smart Option Key is correct, a checkmark will appear in the box next to the selected Smart Option.

Q: How do I get a Smart Option Key?

A: When the Smart Option Key entry box is displayed, write down the internal serial number that is displayed on the bottom line of the box. Write down the serial number that is on the back of the duplicator, (usually near the power plug). Call Greystone Peripherals at (408) 866-4739 and ask to speak to the person responsible for Smart Option sales.

Q: How do I know that my selected Smart Option has been activated?

A: As the duplicator starts up, the enabled and disabled Smart Options information box will be displayed. The operator can activate the Smart Options menu <F5> key at any time to view options that have been enabled.

For Technical Support call: **(408) 866-4739**

Monday - Friday

9:00 a.m. to 5:00 p.m. PST

For Sales, call toll free: **(800) 600-5710** or **(408) 866-4739**

To order by Fax call: **(408) 866-8328**

World Wide Web: <http://www.grystone.com>

<http://www.greystoneperipherals.com>

Fax-Back: **(408) 866-6956 Ext. 401**